

DELIVERING A WORLD CLASS PROJECT

16 January 2020

ASX: ADT
LSE: ADT1

Not for release to US wire services or distribution in the United States



Adriatic Metals

Important Notice & Disclaimer

The information contained in this presentation is in summary form and does not necessarily contain all information which may be material to the making of a decision in relation to Adriatic Metals Plc ("Adriatic" or the "Company"). This presentation should not form the basis of, or be relied on in connection with, any contract or investment decision in relation to any securities.

The information in this presentation is being furnished to you solely for your information and the contents of this presentation shall not be taken as any form of commitment on the part of any person to proceed with any transaction and will not form the basis of any contract.

This presentation does not involve or imply a recommendation or a statement of opinion in respect of whether to buy, sell or hold securities in the Company. The securities issued by the Company are considered speculative and there is no guarantee that they will make a return on the capital invested, that dividends will be paid on the shares or that there will be an increase in the value of the shares in the future.

The information contained in this presentation has not been independently verified. The Company does not make any representation or warranty, express or implied, as to the fairness, accuracy, correctness or completeness of the information, opinions and conclusions contained in this presentation.

Recipients of this presentation must make their own investigations and inquiries regarding all assumptions, risks, uncertainties and contingencies which may affect the future operations of the Company or the Company's securities.

The Company does not purport to give financial or investment advice. No account has been taken of the objectives, financial situation or needs of any recipient of this document.

This presentation is not intended to be, and is not, a prospectus, product disclosure statement, offering memorandum or private placement memorandum for the purpose of Chapter 6D of the Corporations Act 2001. To the maximum extent permitted by law, the Company, its officers, employees and advisers expressly disclaim any responsibility for and make no warranties or representations as to the accuracy or completeness of the material contained in this presentation and exclude all liability whatsoever (including in negligence) for any loss or damage which may be suffered by any person as a consequence of any information in this presentation or any error or omission therefrom. The Company accepts no responsibility to update any person regarding any inaccuracy, omission or change in information in this presentation or any other information made available to a person nor any obligation to furnish the person with any further information. The presentation has not been approved in the United Kingdom by the Financial Conduct Authority (the "FCA") and does not constitute, or form part of, an admission document, listing particulars, a prospectus or a circular relating to the Company.

The content of information contained in the presentation has not been approved by an authorised person within the meaning of the Financial Services and Markets Act 2000 ("FSMA"). Reliance upon this presentation for the purpose of engaging in any investment activity may expose person relying on it individual to a significant risk of losing all of the property or other assets invested. If any person is in any doubt as to the contents of this presentation, they should seek independent advice.

The presentation is not a prospectus and should not be considered as an offer or invitation to acquire shares in Adriatic or any other financial product in any jurisdiction and neither this presentation nor anything in it shall form any part of any contract for the acquisition of Adriatic shares. The distribution of this presentation in jurisdictions outside the United Kingdom, Australia and New Zealand may be restricted by law and you should observe any such restrictions. In particular, this presentation is not an offer to sell, or a solicitation of an offer to buy, securities in the United States. Any shares described in this presentation have not been, and will not be, registered under the US Securities Act of 1933 and may not be offered or sold in the United States except in transactions exempt from, or not subject to, the registration of the US Securities Act and applicable US state securities law. See section captioned "International Offer Restrictions".

This presentation does not constitute an advertisement or a public offer of securities in any jurisdiction.

Note, all figures are expressed in Australian dollars unless otherwise stated.

The information in this presentation which relates to Exploration Results is based on information compiled by Mr Robert Annett, who is a member of the Australian Institute of Geoscientists (AIG). Mr Annett is a consultant to Adriatic, and has sufficient experience relevant to the style of mineralisation and type of deposit under consideration and to the activity he is undertaking to qualify as a Competent Person as defined in the 2012 Edition of the "Australian Code of Reporting of Exploration Results, Mineral Resources and Ore Reserves". Mr Annett consents to the inclusion in this report of the matters based on that information in the form and context in which it appears.

You should be aware that the Company has its securities listed on the ASX and are also admitted to the Standard Segment of the Official List of the Financial Conduct Authority and to trading on the Main Market of the London Stock Exchange ("LSE").

The Company is required to report reserves and resources in accordance with JORC 2012. You should note that while the Company's reserve and resource estimates comply with the JORC 2012, they may not comply with the relevant guidelines in other countries and, in particular, do not comply with (i) National Instrument 43-101 (Standards of Disclosure for Mineral Projects) of the Canadian Securities Administrators and (ii) Industry Guide 7, which governs disclosures of mineral reserves in registration statements filed with the US Securities and Exchange Commission. Information contained in this presentation describing the Company's mineral deposits may not be comparable to similar information made public by companies subject to the reporting and disclosure requirements of Canadian or US securities laws. In particular, Industry Guide 7 does not recognise classifications other than proven and probable reserves and, as a result, the SEC generally does not permit mining companies to disclose their mineral resources in SEC filings. You should not assume that quantities reported as "resources" will be converted to reserves under the JORC Code or any other reporting regime or that the Company will be able to legally and economically extract them.

The information in this presentation is subject to change without notice. Subject to any obligations under applicable law, the Company does not undertake any obligation to update any information in this presentation.

This presentation contains certain statements which may constitute "forward looking statements". The forward looking statements in this presentation apply only as at the date of this presentation. Any forward looking statements in this presentation involve subjective judgment and analysis and are subject to significant uncertainties, risks and contingencies and other factors, including the risks described in this presentation under "Key risks". Such risks may be outside the control of, and are unknown to the Company and its officers, employees, agents or associates. Forward-looking statements involve known and unknown risks, uncertainties and other factors which may cause the actual results, performance or achievements of Adriatic and/or its subsidiaries to be materially different from any future results, performance or achievements expressed or implied by the forward-looking statements. Such factors include, among others, general business, economic, competitive, political and social uncertainties; the actual results of current exploration activities; conclusions of economic evaluations; changes in project parameters as plans continue to be refined; possible variations of ore grade or recovery rates; failure of plant, equipment or processes to operate as anticipated; accident, labour disputes and other risks of the mining industry; and delays in obtaining governmental approvals or financing or in the completion of development or construction activities. Although Adriatic has attempted to identify important factors that could cause actual actions, events or results to differ materially from those described in forward-looking statements, there may be other factors that could cause actions, events or results to differ from those anticipated, estimated or intended. Forward-looking statements contained herein are made as of the date of this presentation and Adriatic disclaims any obligation to update any forward looking statements, whether as a result of new information, future events or results or otherwise. There can be no assurance that forward-looking statements will prove to be accurate, as actual results and future events could differ materially from those anticipated in such statements. Adriatic undertakes no obligation to update forward-looking statements if circumstances or management's estimates or opinions should change. Accordingly, the reader is cautioned not to place undue reliance on forward-looking statements.

News releases, presentations and public commentary made by Adriatic and its officers may contain certain statements and expressions of belief, expectation or opinion which are forward looking statements, and which relate, inter alia, to interpretations of exploration results to date and the Company's proposed strategy, plans and objectives or to the expectations or intentions of the Company's directors. Such forward-looking and interpretative statements involve known and unknown risks, uncertainties and other important factors beyond the control of the Company that could cause the actual performance or achievements of the Company to be materially different from such interpretations and forward-looking statements. Accordingly, the reader should not rely on any interpretations or forward-looking statements; and save as required by the exchange rules of the ASX and LSE or by applicable laws, the Company does not accept any obligation to disseminate any updates or revisions to such interpretations or forward-looking statements. The Company may reinterpret results to date as the status of its assets and projects changes with time expenditure, metals prices and other affecting circumstances. Since the release of the Scoping Study and the Maiden Resource Estimate, the Company confirms that it is not aware of any new information or data that materially affects these estimates.

DEVELOPING THE VAREŠ PROJECT

Advanced polymetallic project located in Bosnia and Herzegovina - leveraged to both precious and base metal exposure



STRONG ECONOMICS

- High margin, high return, low capex

WORLD CLASS PROJECT

- High grade resource
- Excellent metallurgy

ATTRACTIVE JURISDICTION

- Excellent infrastructure endowment
- Neighbouring Tier-1 deposits
- First mover advantage

CLEAR PATH TO PRODUCTION

- Well defined permitting process

STRONG 2020 EXPLORATION PROGRAMME

- Growing resource inventory
- Extensive data to support new concession applications

GOOD POSITION TO DEVELOP

- Robust balance sheet
- Fully funded through to completion of BFS
- Sufficient funding to continue aggressive exploration programme

PROVEN TEAM

- Focused team with the experience to deliver the project & significant ownership
- LSE/ASX listed



LOCATED IN A WORLD-CLASS ADDRESS

The Vareš Project is surrounded by established infrastructure & major discoveries



AN ATTRACTIVE MINING JURISDICTION;

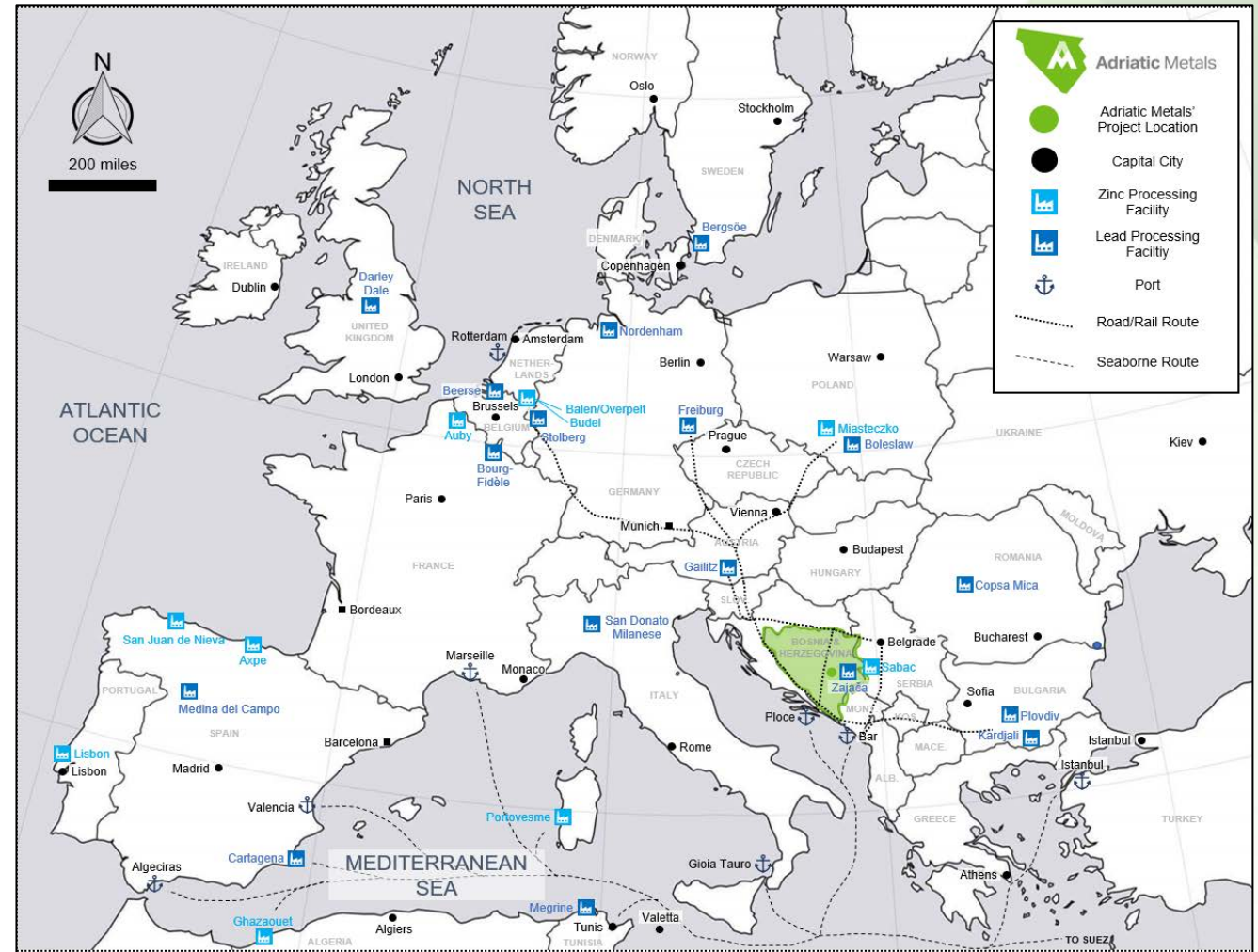
- Well positioned in central Europe with extensive access to rail networks linking European smelters and the seaborne market
- Strong mining history and highly skilled workforce
- Clear and concise mining code in a stable democracy
 - Aspiring entrant to EU and NATO
 - Focus area for global development banks
- Business Friendly Environment
 - 10% corporate tax and favourable royalty regime
 - Publicly supportive local government

NEIGHBOURING SERBIA HOSTS TIER-1 DEPOSITS

- Attracting significant investment from the majors
 - Rio Tinto, Freeport McMoran, Dundee Precious Metals, Zijin Mining, Minenco, Mundoro, and Fortuna Silver.
- Bosnia remains one of the few remaining underexplored regions globally

FIRST MOVER ADVANTAGE IN THE COUNTRY

- Significant barriers to entry for competitors due to expensive concession fees
- Adriatic's existing position and database creates opportunity to acquire further concessions for less cost



THE WORLD CLASS VAREŠ PROJECT

The economically viable Vareš Project consists of two high grade polymetallic deposits



CAPTIVATING ECONOMICS

US\$916.6m NPV₈ **107%** IRR **US\$178.4m*** CAPEX

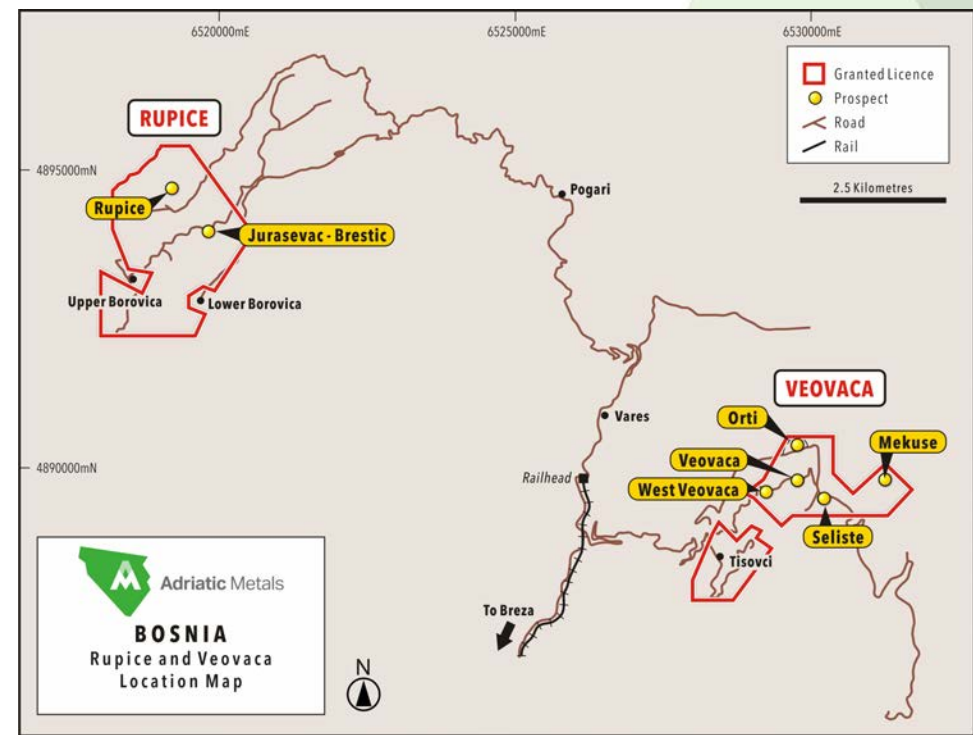
IMPRESSIVE RESOURCE INVENTORY

JORC Classification	Tonnes (Mt)	Au (g/t)	Ag (g/t)	Zn (%)	Pb (%)	Cu (%)	BaSO ₄ (%)
Rupice	9.4	1.8	183	5.1	3.3	0.6	31
Veovaca	7.4	0.1	41	1.4	0.9	-	13
Total	16.8	1.01	120	3.5	2.2	0.3	23.2

FULLY FINANCED

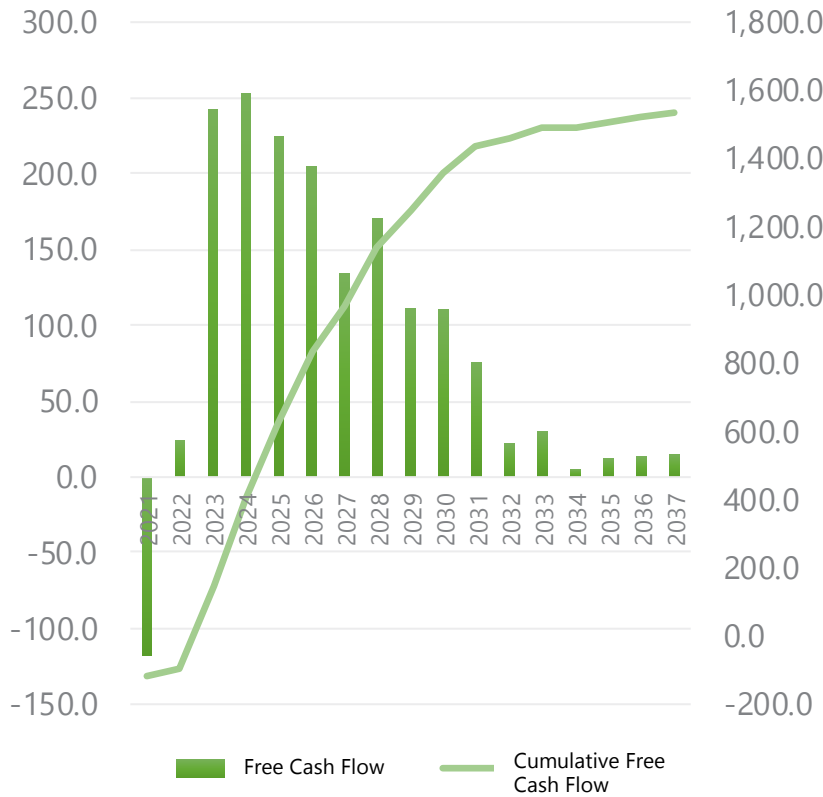
Funded to a construction decision including completion of the Feasibility Study, ESIA and all permitting activities

- Well capitalised following recent A\$25m institutional placement



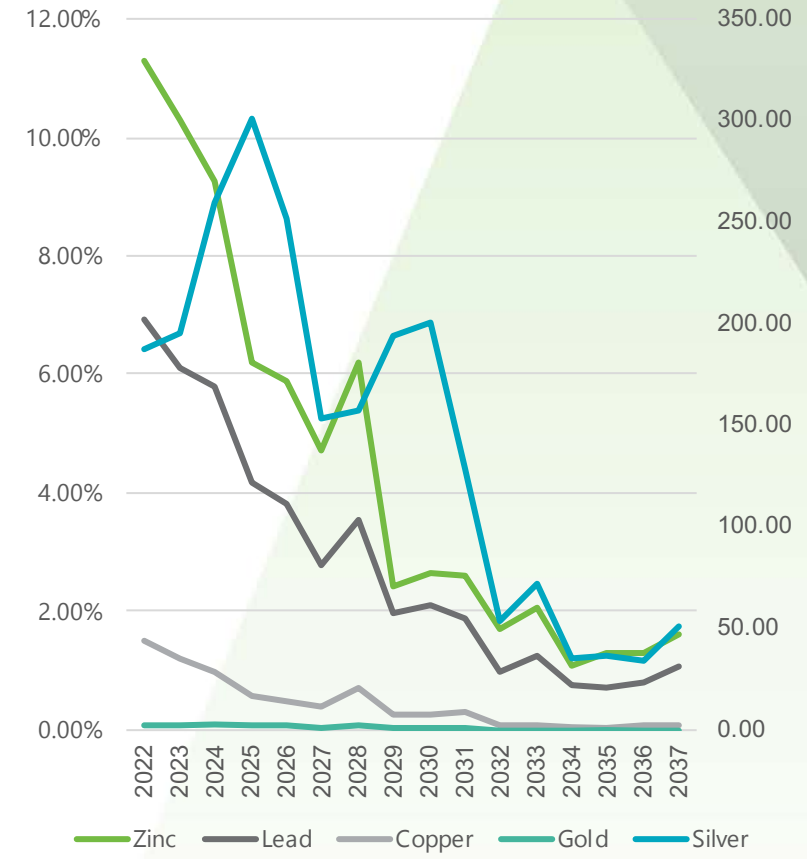
REAL VALUE CREATED

Vares Project Free Cashflow - US\$ Millions



Post Tax NPV (8)	US\$ 916.6 million
Post Tax IRR	107.4%
Post Construction Payback	8 Months
LoM Capital Expenditure*	US\$ 178.4 million
Operating Costs	US\$ 56.67 / tonnes
*Includes 30% Contingency	

Ore Feed Grade



Metal	Silver (US\$/oz)	Gold (US\$/oz)	Zinc (US\$/t)	Lead (US\$/t)	Copper (US\$/t)	Barite CIF (US\$/t)	Antimony (US\$/t)
Price Assumption	17.2	1,440	2,500	2,000	6,500	155	6,500

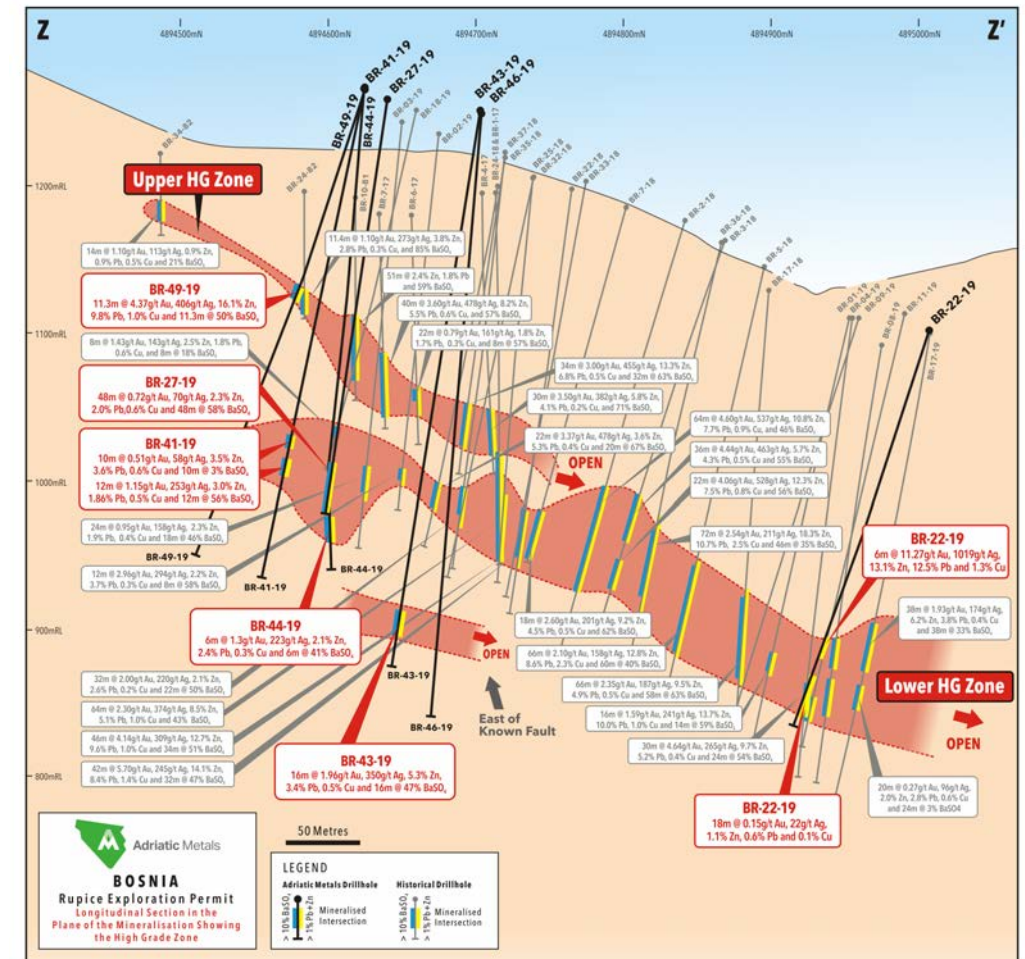
RUPICE HIGH GRADE POLYMETALLIC DEPOSIT



- Maiden JORC 2012 Resource of 9.4Mt¹ - 80% of the Mineral Resource in the Indicated Resources category

JORC Classification	Tonnes (Mt)	Au (g/t)	Ag (g/t)	Zn (%)	Pb (%)	Cu (%)	BaSO ₄ (%)	ZnEq (%)	AuEq (g/t)
Indicated	7.5	2.0	207	5.7	3.7	0.6	34.4	18.3	11.3
Inferred	1.9	0.9	86	2.5	1.6	0.3	18.0	8.3	5.1
Total	9.4	1.8	183	5.1	3.3	0.6	31.1	16.4	10.1

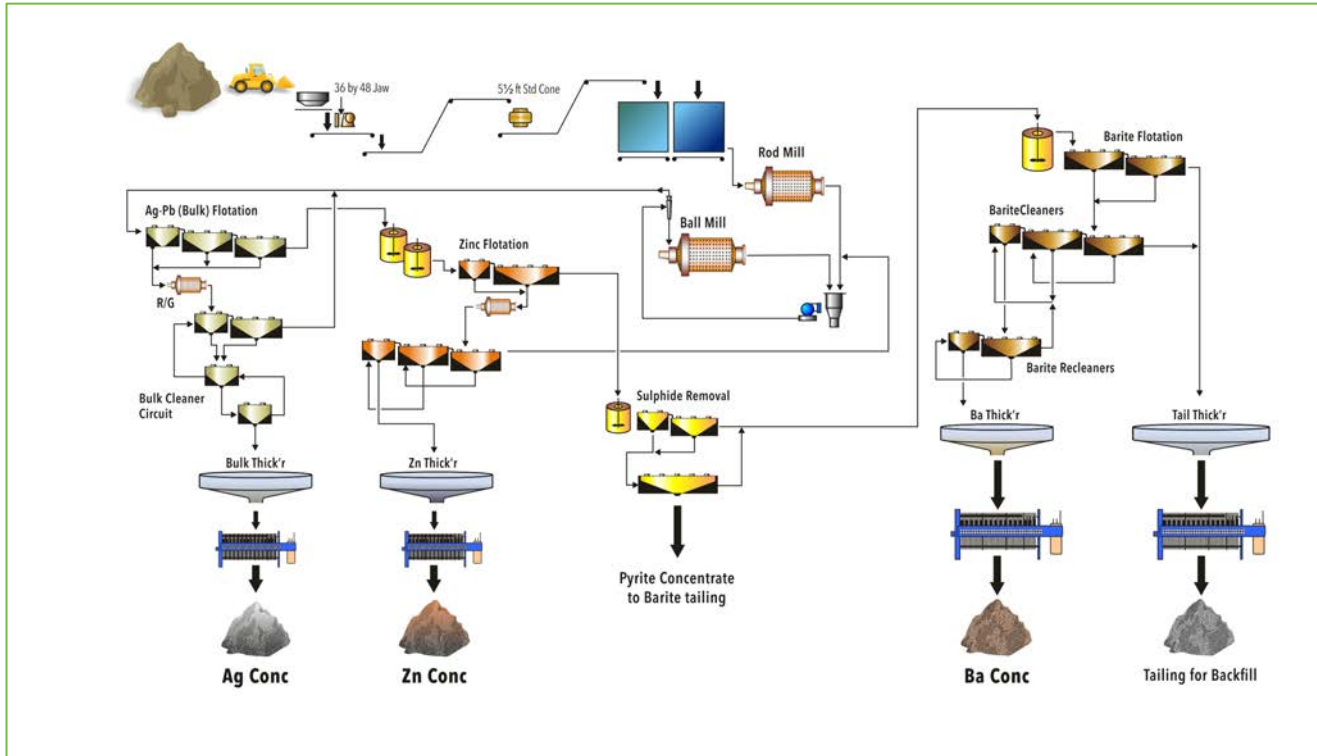
- Mineralisation remains open in all directions
 - Extended strike length by 150m north & south
 - Deeper offset lens recently discovered to east of controlling fault.
 - Expansion programme underway
- 30 kVA IP survey completed and interpretation being tested
- Highest grade intercepts to date exceeds 58m at 58.9% ZnEq or 27.0 g/t AuEq.
- Exploitation permit application advanced and expected in Q2 2020.



RUPICE EXCELLENT METALLURGICAL RECOVERIES

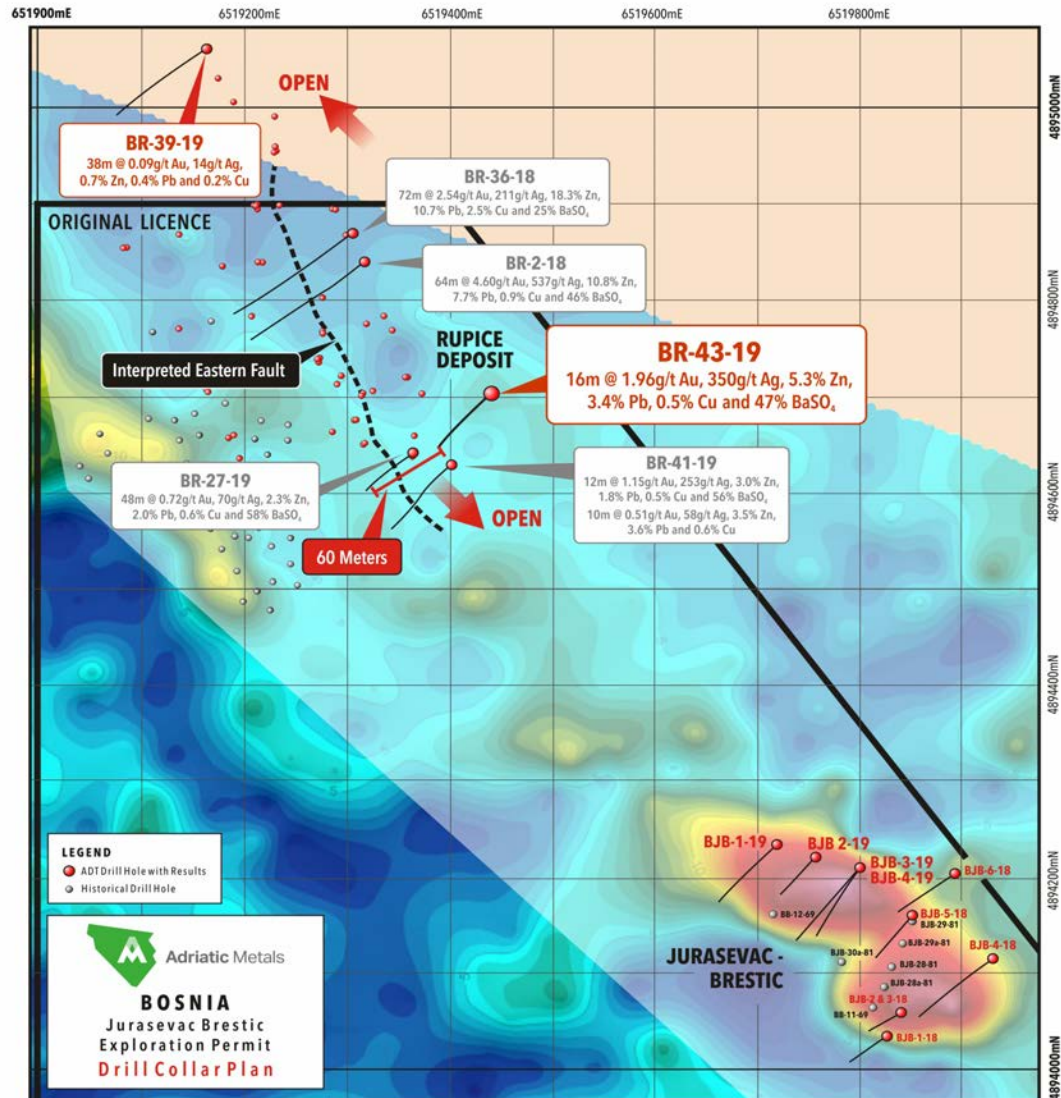


- Extensive testwork completed
- Future testwork to focus on grade variability, improved copper payability and increase gold recovery – results expect in Q1 2020



Metal	Payable Metal Recovery (%)	Grade in Lead Conc	Grade in Zinc Conc	Grade in Barite Conc
Zinc	81.7	10.7%	53.8%	-
Lead	90.4	44.2%	1.25%	-
Silver	92.6	3,549 g/t	337 g/t	-
Gold	67.7	13.9 g/t	5.4 g/t	-
Copper	82.7	6.5 %	0.4 %	-
Barite	71.7	-	-	94.1%

RUPICE STRONG 2020 EXPLORATION PROGRAMME



- BR-43-19 intersected some of the best high-grade mineralisation in the southern extensions of the Rupice mineralisation returning:

16m @ 1.96g/t Au, 350g/t Ag, 5.3% Zn, 3.4% Pb, 0.5% Cu and 43% BaSO₄ including an interval of 10m @ 2.83g/t Au, 536g/t Ag, 7.4% Zn, 4.8% Pb, 0.5% Cu and 60% BaSO₄ from 330m

- BR-43-19 is deepest intercept to date at Rupice approximately 20m east of the interpreted eastern fault and 60m east of the closest intercept in BR-27-19.
- Two southern most drill holes, BR-41-19 and BR-43-19 confirm extensions of the high-grade mineralisation which is now continuous over 550m, and remains open along strike to the south as drill coverage extends towards the Jurasevac-Brestic prospect.

VEOVAČA BROWNFIELD MINE WITH GROWTH POTENTIAL

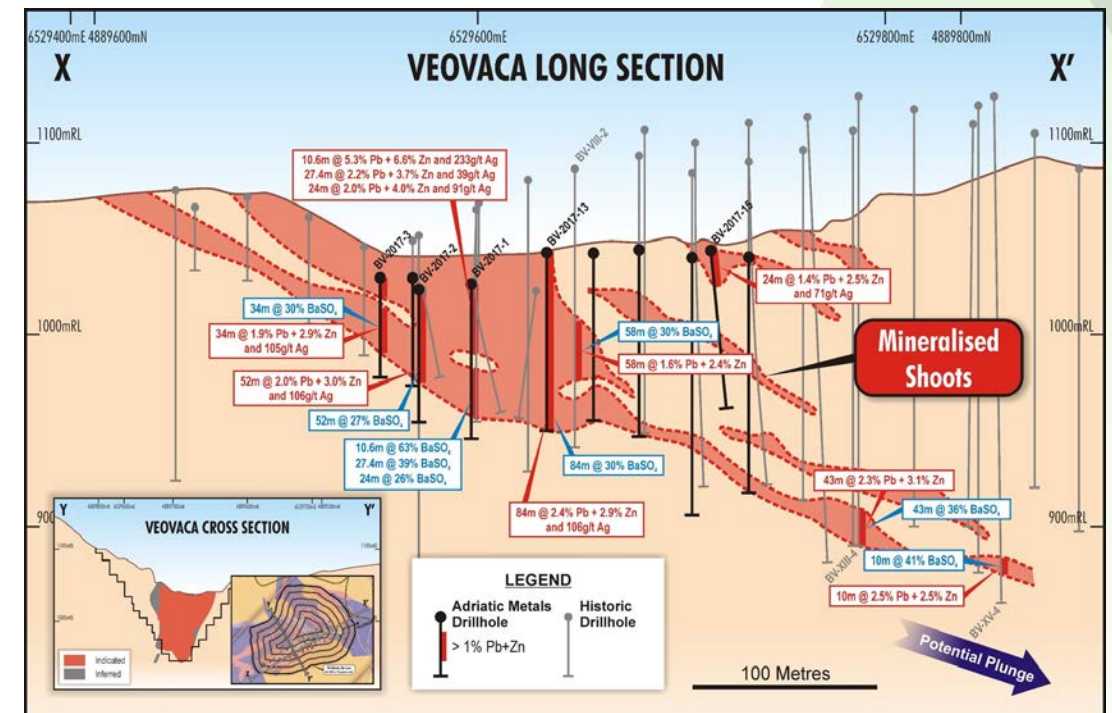


- Updated JORC 2012 Mineral Resource of 7.4Mt¹
 - Indicated Resource increased by 71%

JORC Classification	Tonnes (Mt)	Au (g/t)	Ag (g/t)	Zn (%)	Pb (%)	BaSO ₄ (%)	ZnEq (%)	AuEq (g/t)
Indicated	5.4	0.08	50	1.6	1.0	16.1	4.3	2.7
Inferred	2.1	0.06	17	1.1	0.5	5.9	2.2	1.3
Total	7.4	0.08	41	1.4	0.9	13.2	3.7	2.3

- Previously produced zinc, lead & barite concentrate between 1983 and 1987
- Drilling at Veovača has added gold and silver into the entirety of the Mineral Resource estimate
- Resources begin at the surface and currently extend down to depths of 200m
- Thick mineralisation exposed in pit floor
- Expanded concession covers historic brownfield prospects
- Exploitation Permit near completion and expected Q1 2020

Veovača pit looking south east – ore exposed at surface



SIGNIFICANT REGIONAL GROWTH

Dynamic exploration programmes initiated to explore regional targets

JURASEVAC-BRESTIC & BOROVIKA

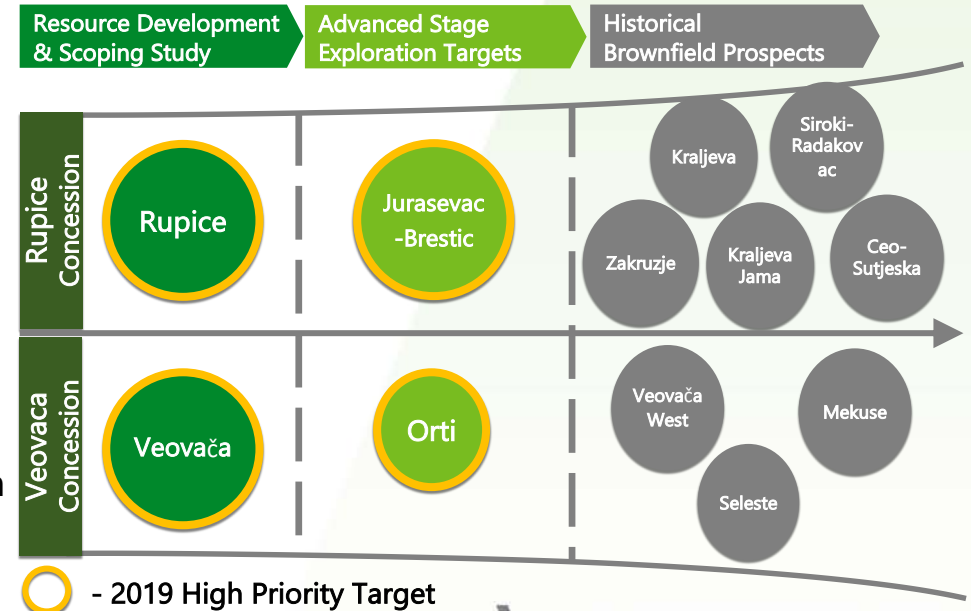
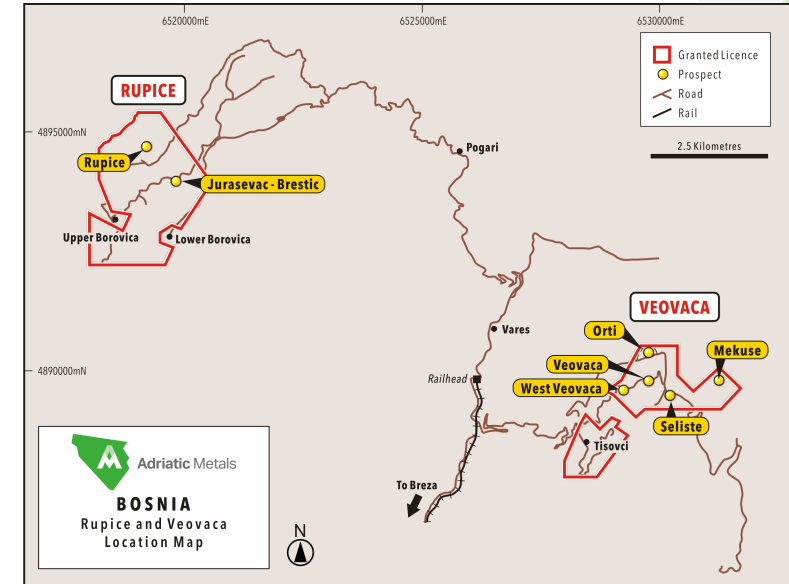
- Early results returning intersections of lead-zinc mineralisation
- Prospective 600m strike length IP target
- High grade grab and soil samples coinciding with Rupice
 - Highs up to 3.47 g/t Au, 339 g/t Ag, 19.4% Zn, 12.25% Pb, and 6.49% Cu

ORTI, SELISTE & VEOVAČA WEST

- 450 soil samples collected at Orti and Seliste
- New discovery – Veovača West
 - Stand out results of up to nearly 2% lead and zinc in soils
 - Historical workings over a 300m strike length sub-parallel to Veovača workings

NEXT STEPS

- Planned drilling at Borovica, Orti and Veovača West prospects in Q1 2020
- Commenced regional mapping and soil sampling of highly prospective 12km corridor between Rupice in the west and Veovača



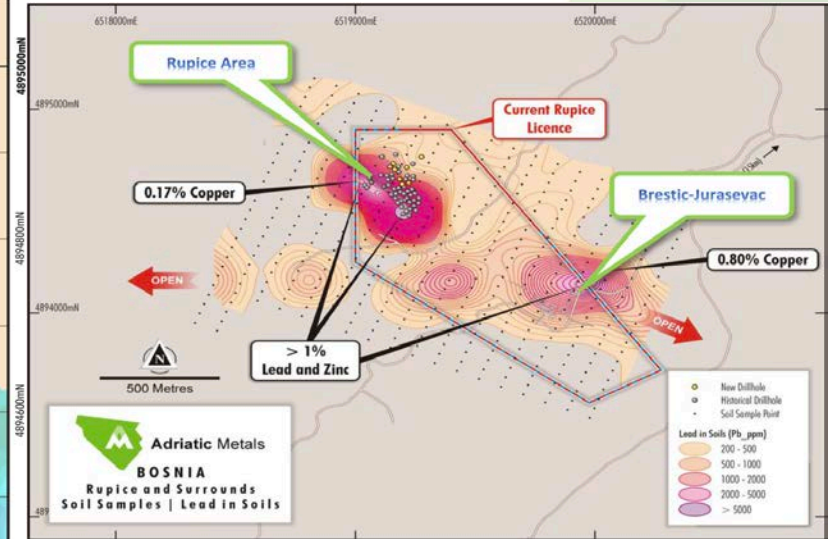
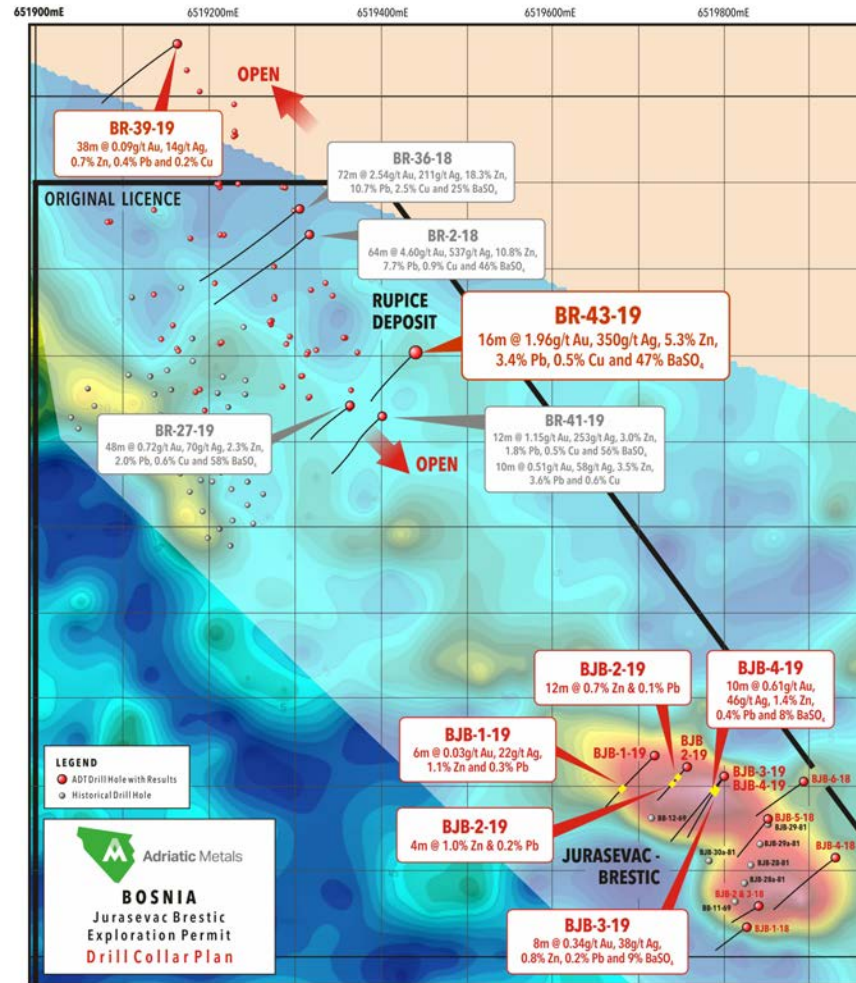
JURASEVAC BRESTIC PROSPECT

HIGH GRADE GRAB SAMPLES FROM HISTORICAL ADITS



Well defined drill targets

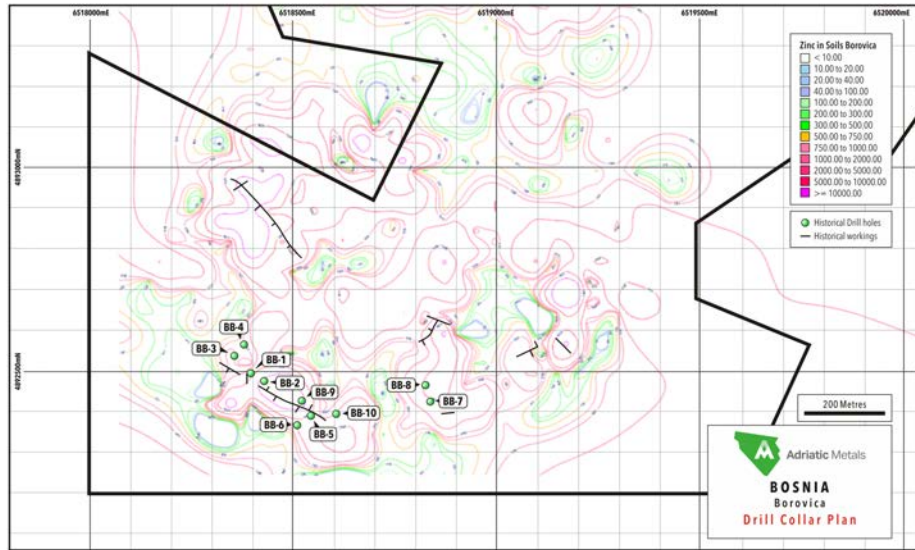
- Anomalous IP targets along strike from known mineralisation at Rupice towards historic workings at BJ (900m strike length)
- Highly anomalous soils coinciding with the Rupice prospect and BJ workings
- High grade grab samples¹ from Jurasevac' adit site of up to 19.4% Zn, 12.25% Pb, 6.49% Cu, 339 g/t Ag and 3.47 g/t Au
- Application of Induced Polarisation (IP) with a high powered (30kVA) 3D array Pole-Dipole method - the 2018 geophysical survey demonstrated that the Rupice mineralisation is receptive to IP techniques



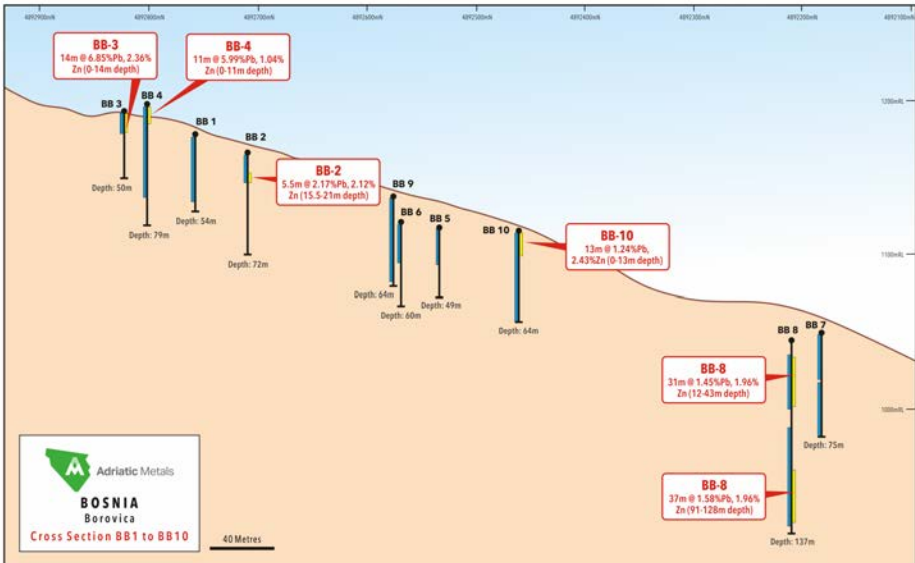
Sample ID	Depth (m)	Au (g/t)	Ag (g/t)	Zn (%)	Pb (%)	Cu (%)
1555	Surface	2.59	186	19.40	12.25	0.84
1553	Surface	3.47	231	14.80	9.17	0.33
1551	Surface	1.28	339	9.80	12.21	3.30
1573	0.5	0.28	118	4.42	7.06	4.78
1554	Surface	0.07	120	0.79	8.19	6.49
1552	Surface	0.47	128	1.81	6.85	7.34
1574	0.5	0.87	72	2.71	5.57	0.82
1576	0.6	0.76	105	2.91	4.55	2.51

BOROVICA PROSPECT

HISTORICAL DATA INDICATES HIGH GRADE MINERALISATION



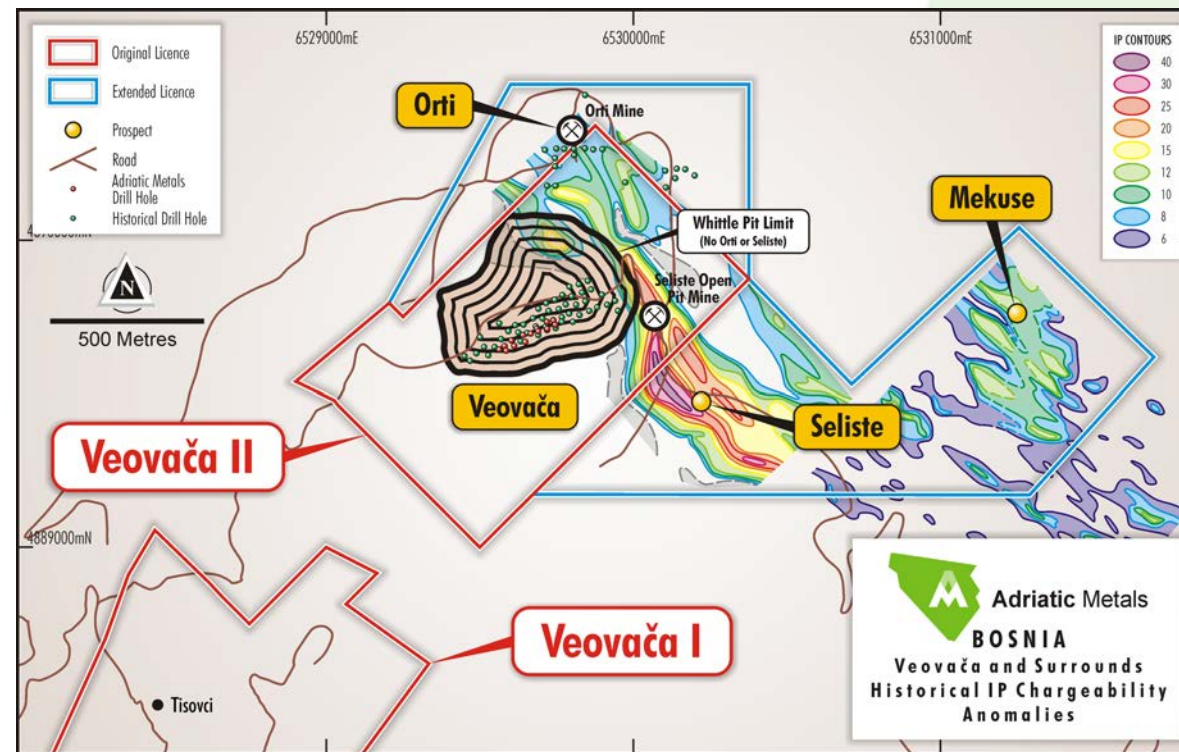
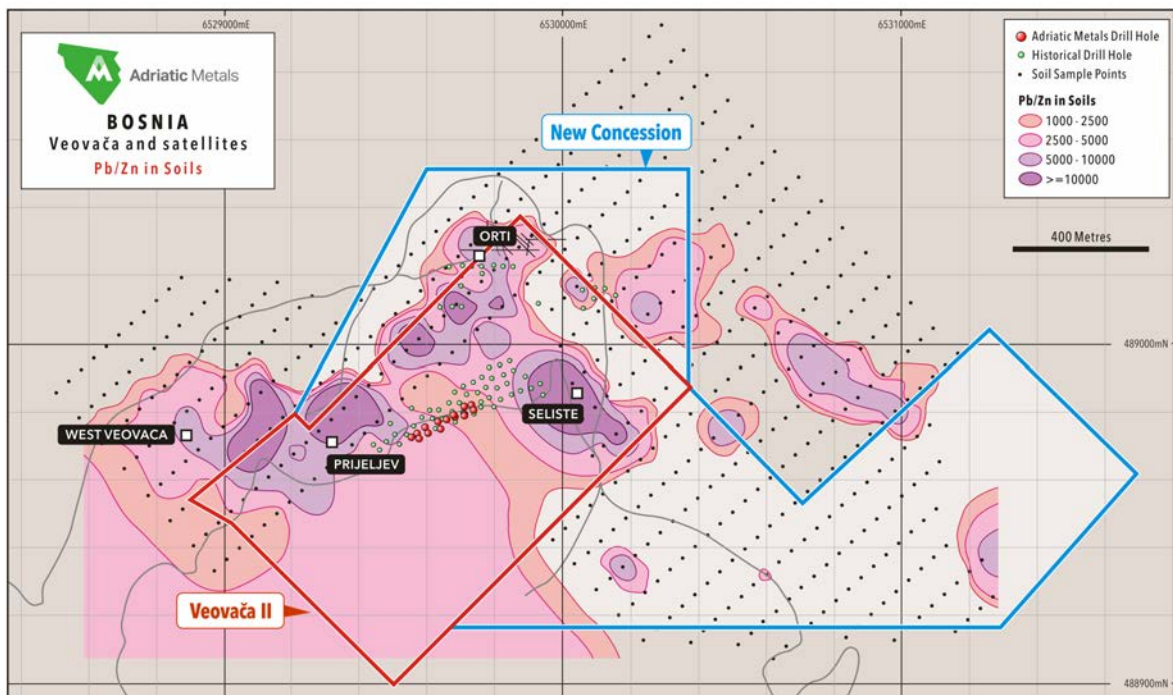
- Historical data discovered in mid 2017 and digitized in 2018 has been analyzed
- Recent soil geo-chemistry and IP geo-physics together with historical drill hole logs supports 2020 drill program decision.
- No historical assay for Precious Metals or Copper



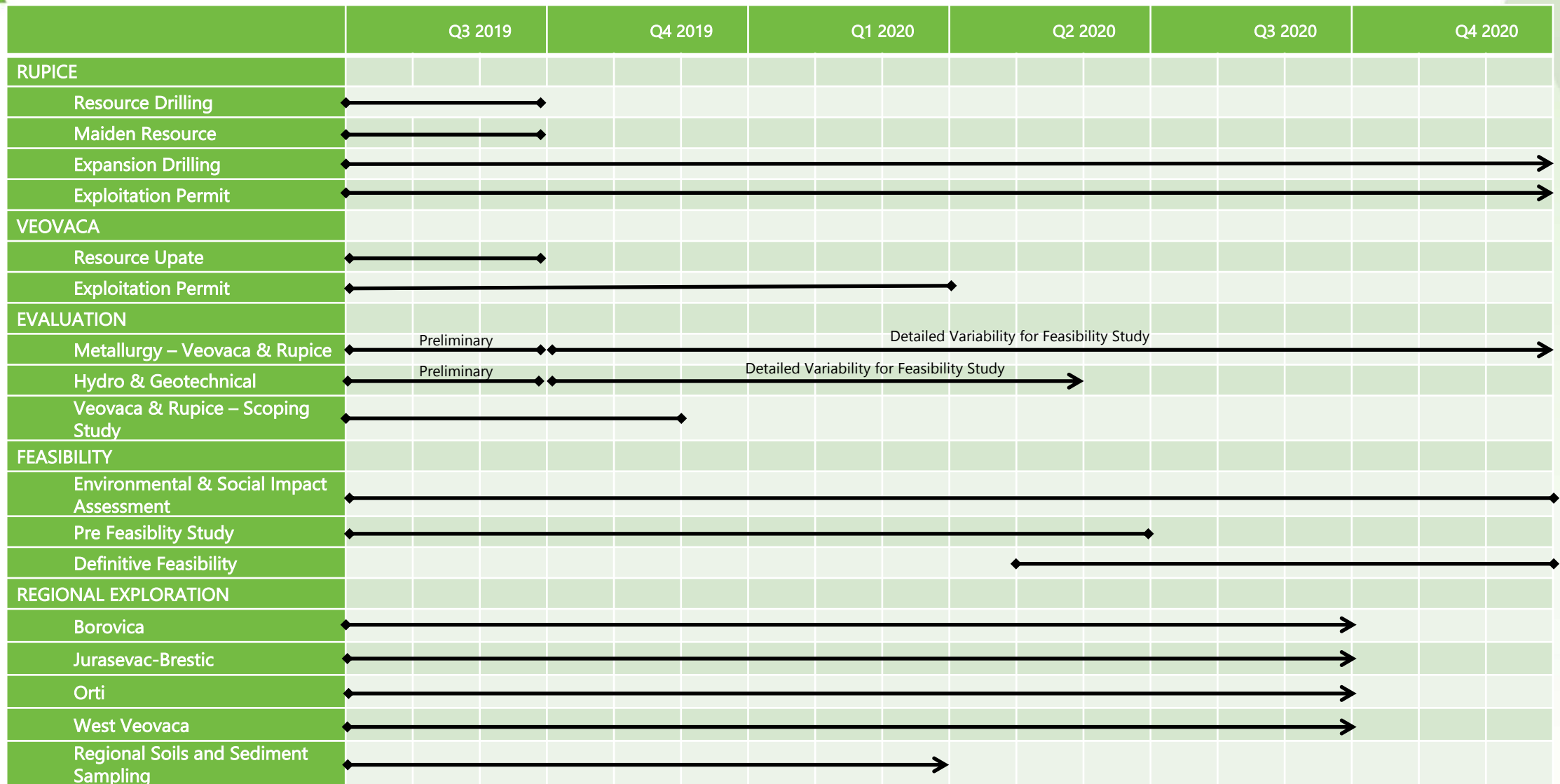
HOLE	FROM	TO	INTERVAL	Zn	Pb
	M	M	M	%	%
BB-2	15.5	21.0	5.5	2.12%	2.17%
BB-3	Surface	14.0	14.0	2.36%	6.85%
BB-4	Surface	11.0	11.0	1.04%	5.99%
BB-8	12.0	43.0	31.0	1.96%	1.45%
	91.0	128.0	37.0	1.96%	1.58%
BB-10	Surface	13.0	13.0	2.43%	1.24%

WEST VEOVACA & ORTI PROSPECTS

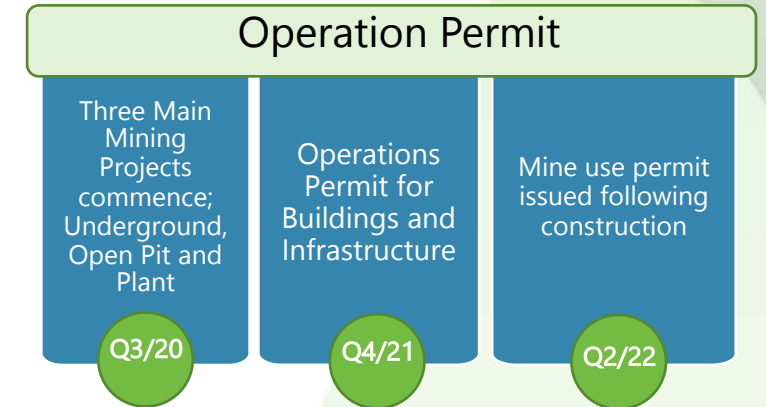
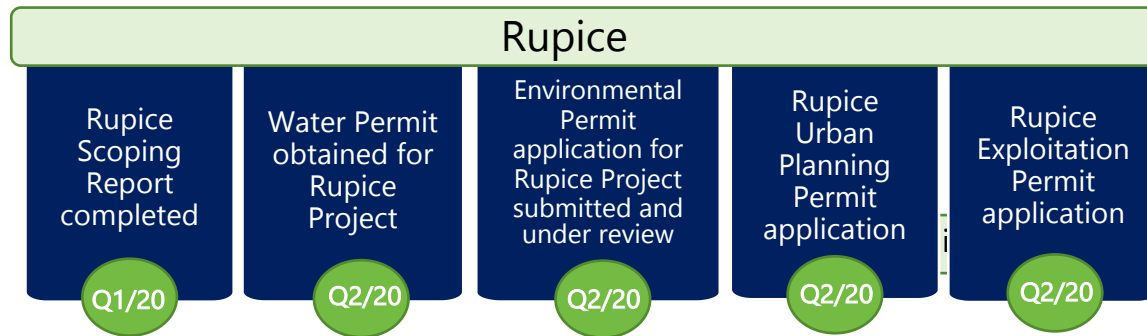
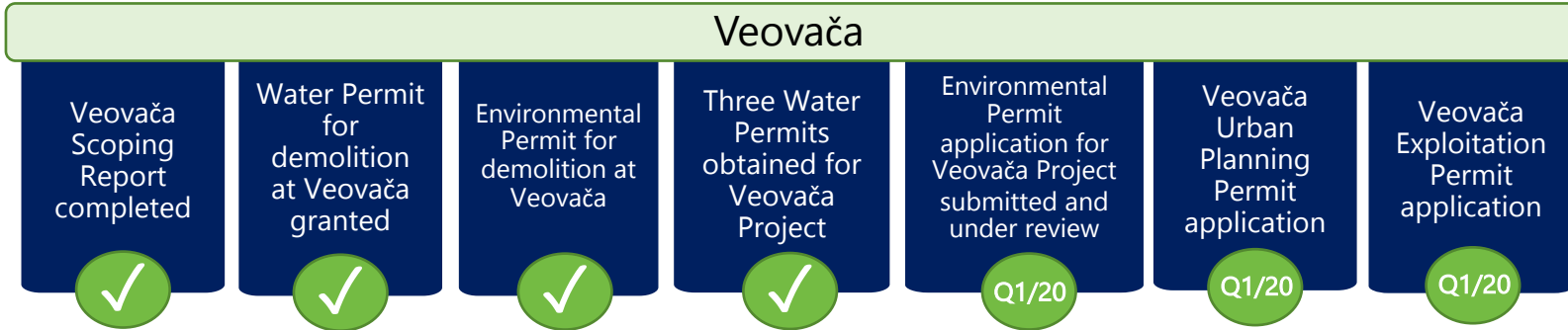
SOIL SAMPLING RESULTS DRIVING NEW EXPLORATION



CONTINUING TO DELIVER ON MILESTONES



CLEAR PERMITTING ROUTE



Construction permits to commence construction of buildings and infrastructure before completion of Main Mining Projects can be obtained accelerating timeline to commercial production

ACTIVE COMMUNITY ENGAGEMENT



- An Information Centre in Vareš has been established to provide the local community with company updates and the opportunity to discuss activity
- Social media channel opened for the Vareš Community Centre
- Meeting with local press to establish good coverage of all local events
- Sponsorship of the following:
 - Vareš Football Club
 - Zenica Rugby Club
- Sponsorship of various Arts & Musical cultural events
- Donation of laptops to Vareš Library
- Critical Resource audit of ESG approach indicated strong community and government support for the project and company



WORLD CLASS BOARD & MANAGEMENT TEAM

SUCCESSFUL TRACK RECORD & STRONG SHAREHOLDER ALIGNMENT WITH 20% OWNERSHIP



PETER BILBE - Non-Executive Chairman

Mr Bilbe is a mining engineer with 40 years Australian and international mining experience in gold, base metals and iron ore at the operational, CEO and board levels. Mr Bilbe is currently Non-executive Chairman of Independence Group NL and is also Non-executive Chairman of Intermin Resources Ltd, an emerging gold developer.



MICHAEL RAWLINSON - Non-Executive Director

Mr Rawlinson was the Global Co-Head of Mining and Metals at Barclays investment bank between 2013 and 2017 having joined from the boutique investment bank, Liberum Capital, a business he helped found in 2007. Mr Rawlinson was previously served as a Non-Executive Director of Talvivaara Mining Company Plc between April 2012 and November 2013.



JULIAN BARNES - Non-Executive Director

Mr Barnes is a geologist with extensive experience in major exploration and development projects. Previously, he was Executive Vice President Dundee Precious Metals with a strong focus on Balkan mining & development. Mr Barnes founded and led Resource Service Group for nearly two decades, which ultimately became RSG Global and has since been sold to Coffey Mining.



SANDRA BATES - Non-Executive Director

Ms Bates is a commercial and strategic international lawyer with over 20 years' experience advising management teams and boards of both listed and private companies in the UK and internationally.



JOHN RICHARDS - Non-Executive Director

Mr Richards is an internationally experienced mining executive with an extensive track record in the initiation and execution of growth strategies and transactions. He currently serves as a Non-Executive Director of ASX listed Saracen Mineral Holdings Ltd and Sheffield Resources Ltd.



PAUL CRONIN - CEO and Managing Director

Mr Cronin is a co-founder and Director of Adriatic Metals and is Managing Director of ASX listed Black Dragon Gold Corp, in addition to being a Director of TSX listed Global Atomic Corporation. Mr Cronin has over 20 years of experience in corporate finance, investment banking, funds management, and commodity trading, with a strong European mining focus.



MILOS BOSNJAKOVIC - Executive Director

Mr Bosnjakovic is a dual national of Australia and Bosnia Herzegovina and was the co-founder of ASX-listed Balamara Resources Limited. He has significant experience in mineral projects in the region and is a qualified lawyer with extensive experience in the Former Yugoslav Republics, Australia and New Zealand.



GRAHAM HILL - Chief Operating Officer

Mr Hill is an experienced mining engineer and was previously CEO of Silver Bear resources where he took the company from exploration through to production, overseeing the development of a remote underground mining operation in Siberia. Mr Hill has successfully overseen multiple mining operations in Africa and central Asia during his 35-year career, which commenced in Anglo American.



GEOFF EYRE - Chief Financial Officer

Mr Eyre is an experienced finance professional with more than 15 years of experience holding senior positions with companies in the mining industry including producing assets, exploration and development stage companies and private equity investment funds.



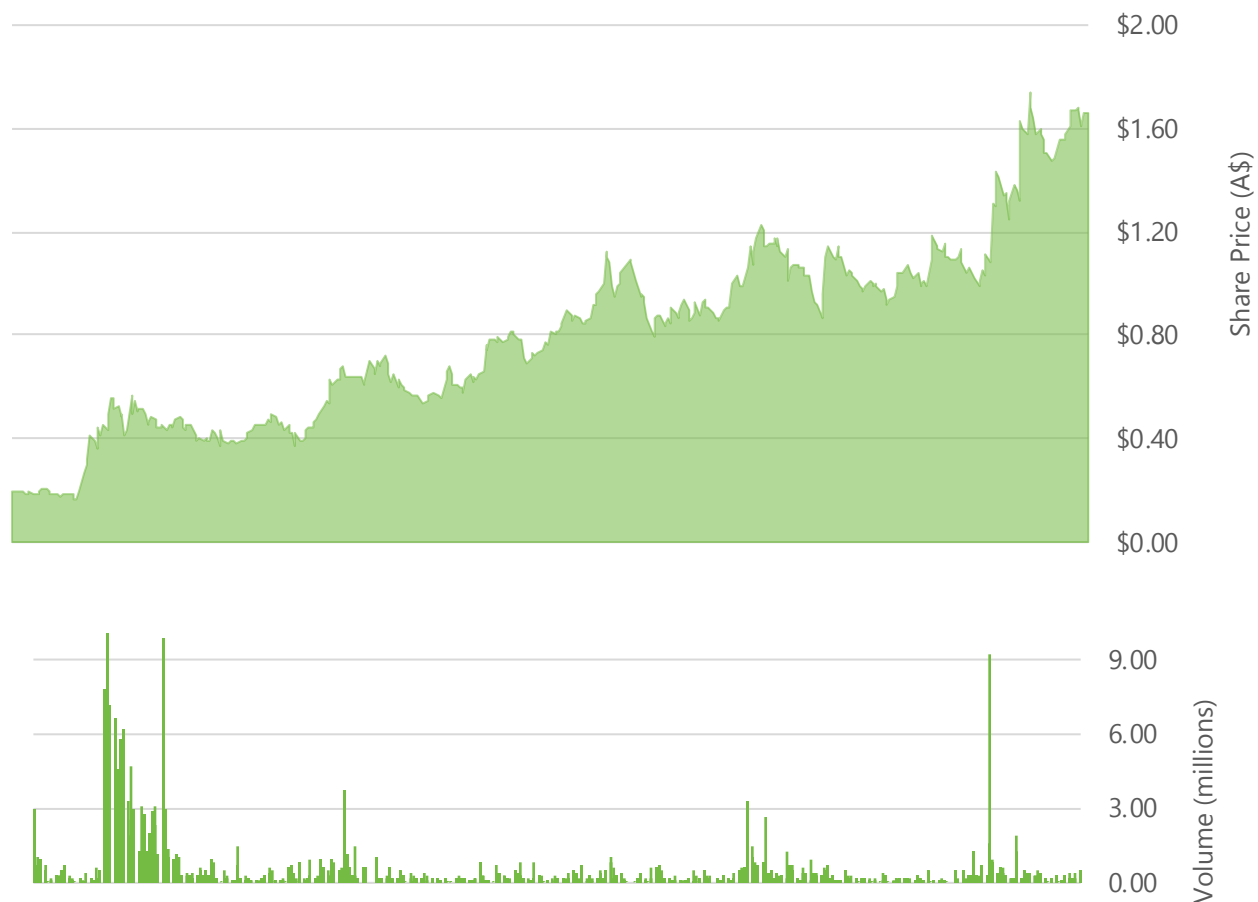
PHILLIP FOX - Chief Geologist

Mr Fox is a geologist with 24 years' experience, in mineral exploration, project generation and management. He has global, multi-commodity geological experience, including assignments on various projects in Australia, Eastern Europe, and South America.

ADRIATIC CORPORATE SNAPSHOT

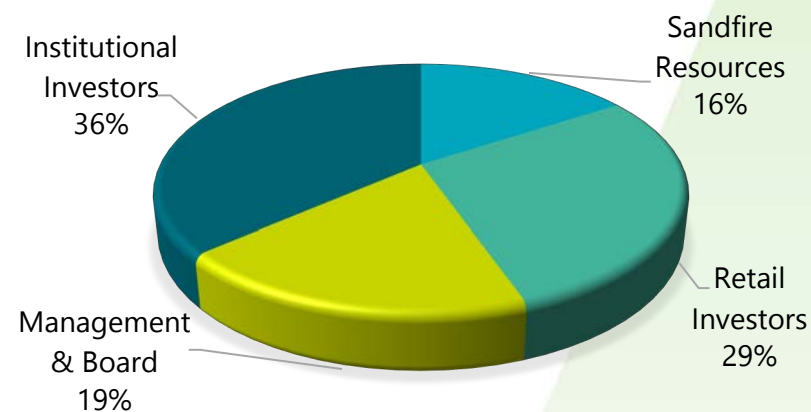


Share Price Performance Since IPO – ASX: ADT & LSE: ADT1



1. At 13 January 2020.
2. Cash of A\$6.9 million as at 30 September 2019 plus A\$25 million gross proceeds from capital raising completed in November 2019.

Shareholder Breakdown



Capital Structure¹

Share Price	A\$1.66
Shares on Issue	178.6M
Market Cap	A\$296.5M
Unlisted Options & Performance Rights	22.2M
Cash ²	A\$31.9M
Debt	N/A
Enterprise Value	A\$264.6M
Daily Average Volume	521,729 Shares

FUNDAMENTALS OF ADRIATIC



Attractive project economics
NPV₈ – US\$916m
IRR – 107%



World class project with high grade resource of 16.8Mt¹



Leveraged exposure to both precious and base metals



Strong regional growth & ability to increase licence holdings with First mover² advantage



Fully funded through to completion of BFS



Well defined permitting route to production



Pro-mining & stable jurisdiction with excellent infrastructure and logistics, in a low cost operating environment



Experienced team delivering the project with significant ownership. LSE listing completed in Q4/2019



Adriatic Metals

CONTACTS

Paul Cronin \ CEO

Emma Chetwynd Stapylton \ IR

+44 (0) 203 950 9138

Blytheweigh \ Financial PR

Camilla Horsfall

Megan Ray

+44 (0) 207 138 3204



Adriatic Metals

APPENDICES



Adriatic Metals

APPENDIX 1 - RUPICE



Rupice Mineral Resources, July 2019

JORC Classification	Tonnes	Grades						Contained Metal					
		Au	Ag	Zn	Pb	BaSO ₄	Cu	Au	Ag	Zn	Pb	BaSO ₄	Cu
	Mt	g/t	g/t	%	%	%	%	koz	Moz	Kt	Kt	Kt	Kt
Indicated	7.5	2.0	207	5.7	3.7	34	0.6	470	50	430	280	2,590	46
Inferred	1.9	0.9	86	2.4	1.6	18	0.3	60	5	50	30	330	6
Total	9.4	1.8	183	5.1	3.3	31	0.6	530	55	480	310	2,920	52

Notes:

1. Mineral Resources are based on JORC Code definitions.
2. A cut-off grade of 0.6% zinc equivalent has been applied.
3. ZnEq – Zinc equivalent was calculated using conversion factors of 0.80 for lead, 0.08 for BaSO₄, 1.80 for Au, 0.019 for Ag and 2.40 for Cu, and recoveries of 90% for all elements. Metal prices used were US\$2,500/t for Zn, US\$2,000/t for Pb, \$200/t for BaSO₄, \$1,400/oz for Au, \$15/oz for Ag and \$6,000 for Cu.
4. The applied formula was: ZnEq = Zn% * 90% + 0.8 * Pb% * 90% + 0.08 * BaSO₄% * 90% + 1.8 * Au(g/t) * 90% + 0.019 * Ag(g/t) * 90% + Cu% * 2.4 * 90%.
5. It is the opinion of Adriatic Metals and the Competent Persons that all elements and products included in the metal equivalent formula have a reasonable potential to be recovered and sold.
6. Metallurgical recoveries of 90% have been applied in the metal equivalent formula based on recent test work results.
7. A bulk density was calculated for each model cell using regression formula $BD = 2.88143 + BaSO_4 * 0.01555 + Pb * 0.02856 + Zn * 0.02012 + Cu * 0.07874$ for the barite high-grade domain and $BD = 2.76782 + BaSO_4 * 0.01779 + Pb * 0.03705 + Zn * 0.02167 + Cu * 0.07119$ for the barite low-grade domain (the barite domains were interpreted using 30% BaSO₄).
8. Rows and columns may not add up exactly due to rounding.

Cut-Off	JORC Class	Tonnes	Au	Ag	Zn	Pb	BaSO ₄	Cu	Au	Ag	Zn	Pb	BaSO ₄	Cu
ZnEq, %		Kt	g/t	g/t	%	%	%	%	koz	koz	Kt	Kt	Kt	Kt
1	Indicated	7,493	1.96	208	5.74	3.71	34.57	0.62	472	50,105	430	278	2,591	46
	Inferred	1,836	0.95	86	2.47	1.60	18.07	0.31	56	5,103	45	29	332	6
	Total	9,330	1.76	184	5.10	3.30	31.33	0.56	528	55,208	475	307	2,923	52
1.5	Indicated	7,059	2.07	220	6.07	3.93	36.57	0.65	470	49,914	428	277	2,582	46
	Inferred	1,553	1.09	100	2.84	1.85	21.09	0.36	54	4,972	44	29	328	6
	Total	8,612	1.89	198	5.49	3.55	33.78	0.60	525	54,887	472	306	2,909	52
2	Indicated	6,559	2.21	235	6.50	4.21	39.06	0.70	467	49,623	426	276	2,562	46
	Inferred	1,266	1.29	118	3.37	2.17	25.36	0.42	53	4,803	43	27	321	5
	Total	7,825	2.06	216	5.99	3.88	36.84	0.65	519	54,426	469	303	2,883	51

APPENDIX 2 - VEOVAČA



Veovača Mineral Resources, July 2019

JORC Classification	Tonnes	Grades					Contained Metal				
		Au	Ag	Zn	Pb	BaSO ₄	Au	Ag	Zn	Pb	BaSO ₄
		g/t	g/t	%	%	%	koz	Moz	Kt	Kt	Kt
Indicated	5.3	0.1	50	1.6	1.0	16	14	9	83	55	860
Inferred	2.1	0.1	17	1.1	0.5	6	4	1	23	11	123
Total	7.4	0.1	41	1.4	0.9	13	18	10	106	66	984

Notes:

1. Mineral Resources are based on JORC Code definitions.
2. A cut-off grade of 0.6% ZnEq has been applied.
3. ZnEq was calculated using conversion factors of 0.80 for Pb, 0.08 for BaSO₄, 1.80 for Au and 0.019 for Ag, and recoveries of 90% for all elements. Metal prices used were US\$2,500/t for Zn, US\$2,000/t for Pb, US\$200/t for BaSO₄, US\$1,400/oz for Au and US\$15/oz for Ag.
4. The applied formula was: $ZnEq = Zn\% * 90\% + 0.8 * Pb\% * 90\% + 0.08 * BaSO_4\% * 90\% + 1.8 * Au(g/t) * 90\% + 0.019 * Ag(g/t) * 90\%$.
5. It is the opinion of Adriatic Metals and the Competent Persons that all elements and products included in the metal equivalent formula have a reasonable potential to be recovered and sold.
6. A bulk density was calculated for each model cell using regression formula $BD = 2.70855 + BaSO_4 * 0.01487 + Pb * 0.03311 + Zn * 0.03493$.
7. Rows and columns may not add up exactly due to rounding.